



The 28th Annual Aging with Developmental Disabilities Conference May 21-22, 2018

www.agingwithdd.org

St. Charles Convention Center
#1 Convention Center Plaza
St. Charles, MO 63303
AADD Contact Info:
agingwithdd@msn.com
Phone (314) 647-8100

SAINT LOUIS UNIVERSITY
SCHOOL OF NURSING



SAINT LOUIS
UNIVERSITY

IDDRC
Washington University in St. Louis

Intellectual and Developmental Disabilities Research Center



Table of Contents

28th Annual Conference Program

Contents

Welcome Letter_____	4
Conference Map_____	5
Conference Schedule & Events - Monday_____	6 - 8
Conference Schedule & Events - Tuesday_____	9-10
Advertisers & Sponsors_____	11-14
Speaker Information_____	15 - 18
CEU Information_____	19
AADD's History_____	19
Exhibitor Information_____	20 -21
AADD's Board of Directors_____	22
NAP Credit Information_____	23
AADD's Trivia Night _____	23



May 21, 2018

Dear Conference Participant,

Welcome to the 28th Annual Conference on Aging with Developmental Disabilities!

We hope that you find these two days to be educational, thought provoking and enjoyable. We also hope that you will take what you learned and what was reinforced and continue to provide the best supports and services to our aging population. We believe that everyone here has that very goal. **We are glad that you are here!**

As you attend different sessions, listen to different speakers, and network, we ask that you keep in mind that the knowledge that you acquire comes from professionals of different disciplines. Look around you. You are surrounded by doctors, nurses, administrators, nurse aides, habilitation specialists, QDDP's, family members, self-advocates, case managers, social workers and a host of other people who care and worry about people with developmental disabilities who are aging. That being said, you may notice that language, philosophy and practices differ from state to state, aging to DD world, person to person. Please take the opportunity to listen to the message and use what you learn for the betterment of the people we all support.

Thank you for your continued support of our older individuals with developmental disabilities!

Sincerely,

The 28th Annual Aging with Developmental Disabilities Conference Committee

Valerie Baker**, Mass Mutual St. Louis

Martha Brown**, Martha C. Brown & Associates, LLC

Anita Contreras**, Warren County DD Board

Carol Crebs**, Retired Educator

Leslie DeGroat, MO Department of Mental Health

Sarah Funaiolo, Mercy Hospital St. Louis

Cody Hinkle**, Beverly Farm Foundation

Pamela Merkle*, Association on Aging with DD

Dawn Oppy*, Association on Aging with DD

Nancy Shrewsbury**, SLUCare Physician's Group

Sheila Wunning, MO Department of Mental Health

Anna Zelinske, Productive Living Board of St Louis County

Kelli Barton**, UMKC Institute for Human Development

Jill Cigliana, Memory Care Home Solutions

Karen Cox, EverSpring Pharmacy

Michelle Darden*, Association on Aging with DD

Katherine Farache*, Association on Aging with DD

Catherine Goebel**, Retired Professional Guardian

Shirley Kervin, Therap Services

Cynthia Mueller, Licensed Psychologist

Terry Reiser, Gerontologist

Stacy Wilson, Therap Services

Treka Young, MO Department of Health & Senior Services

Buz Zeman**, Housing Options for the Elderly

*AADD Staff **AADD Board Member

The Conference Planning Committee has selected speakers who are experts in their field. Speakers are solely responsible for the content of their presentation.

St. Charles Convention Center Map

 Denotes room entrances

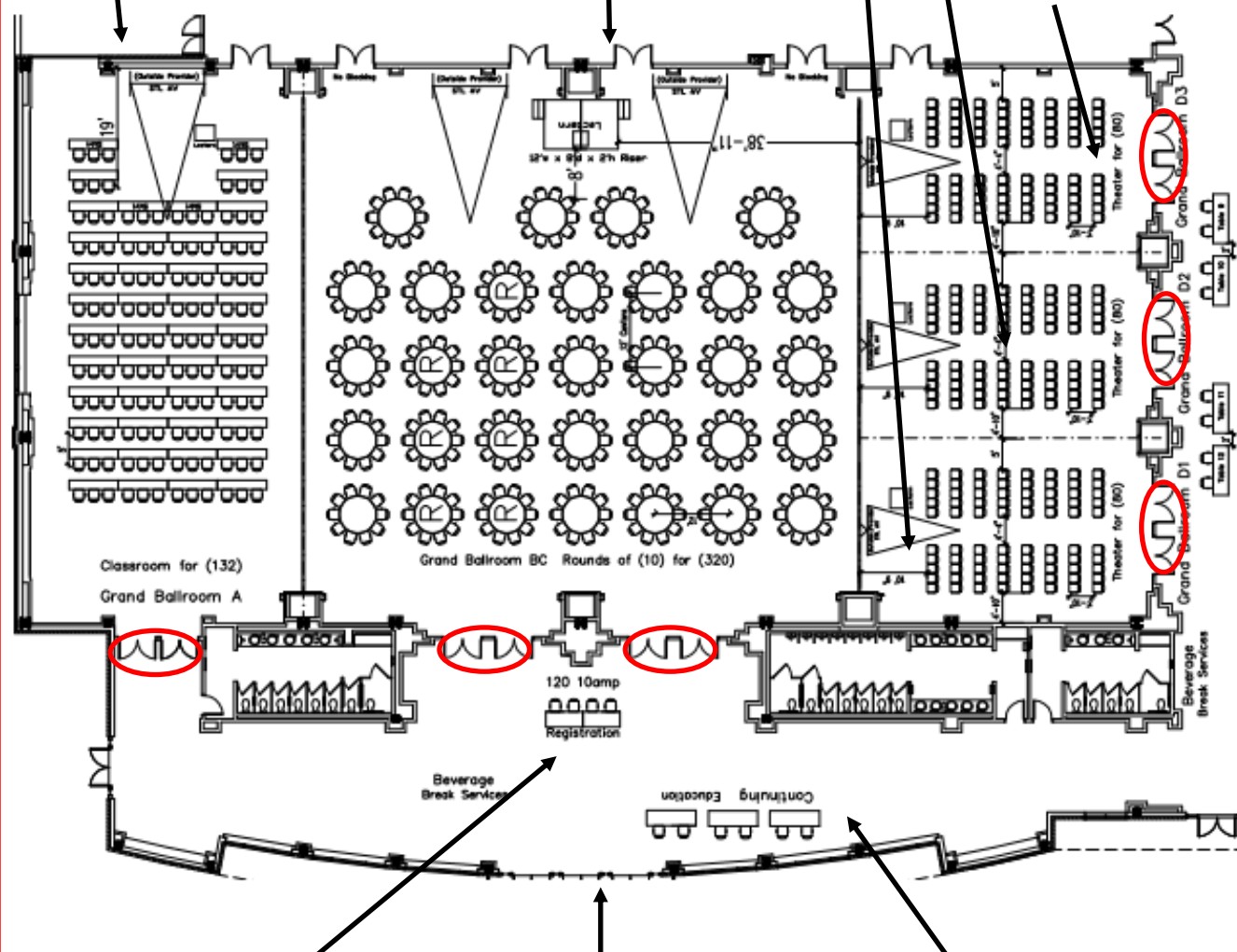
Ballroom D1

Ballroom D2

Ballroom A

Grand Ballroom

Ballroom D3



Escalators

Exhibitors

Elevators

Entrance

CEU Information

Registration Table

the 28th Annual **AGING** with Developmental Disabilities Conference May 21-22, 2018



Conference Location

St. Charles Convention Center
#1 Convention Center Plaza, St. Charles, Missouri 63303

For More Information

Contact AADD at (314) 647-8100
www.agingwithdd.org

Monday, May 21

8:30 Registration/Exhibitors

9:30 **KEYNOTE ADDRESS: The Psychology of Hoarding and How to Support an Aging Person with DD Who Hoards** *Grand Ballroom*



Dr. Max Zubatsky

MAX ZUBATSKY, PhD, LMFT, SAINT LOUIS UNIVERSITY

While greater awareness has been given toward hoarding and cluttering in our society, little has been addressed around what family members and others can do to help an aging adult with these problems. Without adequate assessment, treatment, and support interventions, hoarding will continue to remain a critical public health concern in America. Attend this session to learn skills and resources you can use to address hoarding issues for those with whom you work.

10:30 Break

10:45 Breakout Session I

DIRECT SERVICE TRACK A	PROFESSIONAL TRACK B	NURSING TRACK C	POTPOURRI TRACK D
TEACHING STRATEGIES: USING EVIDENCED-BASED PRACTICES Michael Kiener, PhD, CRC, Maryville University Staff who work with people with developmental disabilities who are aging often need to find creative ways to assist the individuals they support in maintaining existing skills, meeting goals and outcomes, and developing skills for independence. Explore the most current research on Evidence-Based Practices (EBP). <i>Ballroom A</i>	HIRING, RETAINING, AND MOTIVATING DIRECT CARE STAFF Cynthia L. Mueller, PhD, Licensed Psychologist Learn what works (and what doesn't) to recruit, train, and keep the best staff who have the skills needed to support people with developmental disabilities as they age. <i>Ballroom D1</i>	ASPIRATION & CHOKING Craig Escudé, MD, Mississippi Department of Mental Health Hudspeth Regional Center and Sherry Neal, RN-BC, CDDN, Health Risk Screening, Inc. This session will provide opportunities to learn how aging impacts aspiration and choking as well as steps that caregivers can take to prevent either from occurring. <i>Ballroom D2</i>	OBSERVATION SKILLS CAN SAVE A LIFE Janet Whitworth, DNP, APRN, FNP-BC, Barnes-Jewish Hospital Recognizing when someone needs medical care is critical to maintaining health as we age. Learn to use your senses to identify changes that may require medical attention for those in your care. <i>Ballroom D3</i>

We gratefully acknowledge our sponsors:

SAINT LOUIS UNIVERSITY
SCHOOL OF NURSING



Partially funded by the

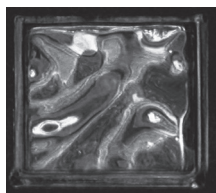


SAINT LOUIS
UNIVERSITY



IDDRC
Washington University in St. Louis

Intellectual and Developmental Disabilities Research Center



the 28th Annual AGING

with Developmental Disabilities Conference



Monday, May 21 (continued)

11:45 Lunch

1:00 Breakout Session II

DIRECT SERVICE TRACK A	PROFESSIONAL TRACK B	NURSING TRACK C	POTPOURRI TRACK D
SUPPORTING INDIVIDUALS OF ALL ABILITIES WITHIN THE CRIMINAL JUSTICE SYSTEM Mary Ann Gehrin, MA, Options for Justice Learn about some of the many unique challenges one faces once they find themselves involved in the Criminal Justice System. Explore a variety of techniques and resources available to individuals, families, and professionals within the Criminal Justice and Developmental Disabilities delivery systems.	POLITICAL ADVOCACY FOR THE INDIVIDUALS YOU SUPPORT: MEDICAID, MEDICARE, AND MORE Ed Weisbart, MD, CPE, FAAFP, MO Chapter of Physicians for a National Health Program Learn the compelling evidence of the value of Medicaid, both clinical and economic, and understand how to best protect Medicare for all Americans, including the elderly and disabled.	INCLUSION INCLUDES HOSPICE Holly Wamser, MSN, RN, BJC Hospice Explore the benefits of hospice services for individuals with developmental disabilities, potential barriers to providing hospice care, and techniques to overcome them.	TELECARE/REMOTE MONITORING Jeff Grosvenor, 2Gether Tech Assistive technology provides a safe, cost effective alternative to supporting individuals in their own homes. Learn about a cost-effective alternative to ensure a safe, independent, and respectful home environment.
<i>Ballroom D1</i>	<i>Ballroom D2</i>	<i>Ballroom A</i>	<i>Ballroom D3</i>

2:00 Break

2:15 Breakout Session III

DIRECT SERVICE TRACK A	PROFESSIONAL TRACK B	NURSING TRACK C	POTPOURRI TRACK D
WHERE EVERYBODY KNOWS YOUR NAME Anita Contreras, MSW, Warren County DD Board and Nancy Shrewsbury, MSN, SLUCare Physician's Group Learn how to open doors in our community and ensure that individuals participate in meaningful activities.	OUTCOMES – TECHNOLOGY IN DOCUMENTATION; EVIDENCED-BASED FUNDING Jeff Case, PMP, Therap Learn about recent developments in Individual support documentation and reporting, electronic health records (EHR) and training management from a technology leader in the developmental disabilities field.	FIVE FATAL (PLUS ONE) Craig Escudé, MD, Mississippi Department of Mental Health Hudspeth Regional Center and Sherry Neal, RN-BC, CDDN, Health Risk Screening, Inc. There are five conditions (plus one) that are more likely to result in death or health deterioration for persons with developmental disabilities. This session will allow attendees to identify why aging may increase the risk of developing one or more of the fatal five and understand the need for close observation of the aging population.	REDUCING DISABILITY IN DEMENTIA—KANSAS CITY (RDAD-KC): YEAR ONE UPDATE Kelli Barton, PhD, UMKC Institute for Human Development, Eric Vidoni, PT, PhD, University of Kansas Medical Center, and Amy Yeager, LMSW, Alzheimer's Association - Heart of America Chapter Learn about successes and challenges in implementing the project "Kansas City Collaborative to Enhance Access to Physical Activity and Behavioral Supports for Individuals with Alzheimer's Disease and Related Dementias," and increase knowledge of implementing the RDAD program.
<i>Ballroom A</i>	<i>Ballroom D3</i>	<i>Ballroom D2</i>	<i>Ballroom D1</i>

3:15 Break

3:30 Breakout Session IV

DIRECT SERVICE TRACK A	PROFESSIONAL TRACK B	NURSING TRACK C	POTPOURRI TRACK D
ADAPTIVE ENVIRONMENTS FOR AGING IN PLACE AND DEMENTIA Kari Burch, OTD, OTR/L and Sheila Lynch, OTR/L, Memory Care Home Solutions Learn how to recognize the impact of dementia-related cognitive and behavioral impairments on independence and safety in the home environment. What are the barriers, and what modifications can be made to help maintain independence?	SPIRITUALITY Kate Fox, MA, Spiritual Director Attendees will increase their awareness of the need to attend to their own spiritual lives. Spiritual practices that encourage open-hearted and centered presence will be explored.	EPILEPSY AND AGING Lawrence N Eisenman, MD, PhD, Washington University School of Medicine To be considered a developmental disability, epilepsy must be diagnosed prior to age 22. However, individuals with developmental disabilities may also be diagnosed with seizure disorder later in life. Learn what is new in the field of aging with epilepsy.	ATTENTION PLEASE: ADDRESSING COGNITIVE GOALS USING MUSIC Mary Hitchcock-Reinhart, MT-BC, NMT Fellow, Ranken Jordan Pediatric Bridge Hospital Participants will learn interventions, using music to address cognitive goals for individuals who are aging with a developmental disability.
<i>Ballroom A</i>	<i>Ballroom D2</i>	<i>Ballroom D3</i>	<i>Ballroom D1</i>

4:30 Conference concludes for the day



You're Invited on Monday!

Who: All 2018 AADD Conference Attendees

What: Meet others interested in the area of aging with developmental disabilities with the added bonus of missing rush hour traffic!

Where: Hotel lobby — Cyprus Grill (look for the red & gray balloons)

When: Monday May 22, 2017 4:30 p.m. to ?? — stay a few minutes or a few hours!

How: Cash bar and appetizers available for purchase

Enjoy some networking time after the Conference to meet other Conference attendees, AADD employees, Board Members, and Conference Committee members.

Look forward to seeing you there!



Monday: Ideas for Enhancement ~

**Discussion for Missouri Department of Mental Health
Division of DD, Regional Office Quality Enhancement RNs
and State Operated Programs RNs**



MO-DMH/IDD nurses are invited to discuss our ideas from the 28th Annual Aging with Developmental Disabilities Conference and explore ways to implement these ideas.

**Monday, May 21, 2018
at 4:30 pm
in Ballroom D3**



Tuesday, May 22

8:00 Registration/Exhibitors

8:30 KEYNOTE ADDRESS: AUTISM & AGING

Grand Ballroom

JOSEPH PIVEN, MD, CAROLINA INSTITUTE FOR DEVELOPMENTAL DISABILITIES AT UNIVERSITY OF NORTH CAROLINA AT CHAPEL HILL AND LAURA KLINGER, PHD, TEACCH AUTISM PROGRAM AT UNIVERSITY OF NORTH CAROLINA AT CHAPEL HILL

At the end of this keynote presentation, audience members will understand the increased risk of neurological and psychiatric disorders of elderly people with autism spectrum disorder.

9:30 Break

9:45 Breakout Session I



Dr. Joseph Piven



Dr. Laura Klinger

DIRECT CARE TRACK A	PROFESSIONAL TRACK B	NURSING TRACK C	POTPOURRI TRACK D
AGING WITH I/DD: IS SEXUALITY RELEVANT? Christina Meneses, MSW, YWCA Sexual Health and Disability Education program Increase your knowledge regarding how sexuality education can benefit adults aging with developmental disabilities. Additionally, learn about available resources to create a sexuality education program at your organization. <i>Ballroom D2</i>	CONTINUATION OF AUTISM & AGING Joseph Piven, MD, Carolina Institute for Developmental Disabilities at University of North Carolina at Chapel Hill and Laura Klinger, PhD, TEACCH Autism Program at University of North Carolina at Chapel Hill Join this more in-depth follow-up to the keynote presentation on elderly people with autism spectrum disorder. <i>Ballroom D1</i>	MEDICAL OR BEHAVIORAL? WHY DETERMINING THE DIFFERENCE CAN AVOID UNNECESSARY MEDICATIONS IN THE AGING DD POPULATION Craig Sever, RPh, Everspring Pharmacy Many behavioral issues are misdiagnosed or undiagnosed medical issues. Join this session to learn how to better evaluate clients to accurately identify the source of their problem to avoid unnecessary medications. <i>Ballroom A</i>	IT'S ALL ABOUT THE PROCESS; MAKING ART AND COMMUNITY AT LIVING ARTS STUDIO Gina Alvarez, Living Arts Studio/VSA Arts of Missouri Join a local artist from Living Arts Studio for a talk and experimental art activity regarding the process of art and mark making, exploring the concept of process vs. product and how that relates to all persons regardless of age or ability. <i>Ballroom D3</i>

10:45 Break

11:00 Breakout Session II

DIRECT CARE TRACK A	PROFESSIONAL TRACK B	NURSING TRACK C	POTPOURRI TRACK D
SUPPORTING AGING PARENTS Sharon Spurlock, BA, St. Louis Arc Increase understanding of the perspective of aging parents of persons with developmental disabilities. Learn how to use futures planning resources to guide LifeCourse conversations with aging parents. <i>Ballroom D2</i>	WHAT TO DO WHEN THE ATTORNEY CALLS Martha Brown, JD, CELA, Martha C. Brown & Associates, LLC This session will cover the different legal terms and processes that a professional may encounter in their work with aging individuals with developmental disabilities. <i>Ballroom D3</i>	OPPORTUNITIES FOR ORAL HEALTH IN MISSOURI John Dane, DDS, FAAHD, DABSCD, Missouri Department of Health and Senior Services This session will cover the state of Oral Health for Persons with Disabilities in Missouri, training opportunities to increase the number of dental providers, and how TeleHealth can impact access to care for persons with developmental disabilities. <i>Ballroom D1</i>	ASSESSING DEMENTIA IN ADULTS WITH DOWN SYNDROME Christina Lessor-Schlaggar, PhD, Washington University School of Medicine Participants will learn how to integrate knowledge of the elevated risk of dementia in the Down syndrome population into their practice and will appreciate the dearth in knowledge about the behavioral assessment and neurobiology of dementia in Down syndrome. <i>Ballroom A</i>

12:00 Lunch and Award Presentations

1:15 Breakout Session III

DIRECT CARE TRACK A	PROFESSIONAL TRACK B	NURSING TRACK C	POTPOURRI TRACK D
DISASTER PREPAREDNESS FOR PEOPLE WITH DEVELOPMENTAL DISABILITIES WHO ARE AGING Beckie Gierer, MS, MO Department of Mental Health Office of Disaster Services Learn about the emotional impact of disasters, what emergency plans exist, and how to support the behavioral health needs of survivors. <i>Ballroom D2</i>	COMPANIONING THE GRIEVING Dorothy M. Gannon, MDiv, Bethesda Hospice Care Participants will know the basic components of grief, understand types of grief and be able to identify complicated grief and learn basic strategies to support people who are grieving. <i>Ballroom D1</i>	BREAST CANCER SCREENING—WHO, WHEN, WHY, AND HOW? Amy Cyr, MD, FACS, Siteman Cancer Center at Washington University School of Medicine Learn best practices in early detection of breast issues in aging men and women with developmental disabilities, including treatment options, explaining diagnosis and treatment in simple terms to the person with an intellectual disability. <i>Ballroom D3</i>	HEAD INJURY AND AGING: STRATEGIES TO PRESERVE INDEPENDENCE Debbie Dinzebach, OTR/L, The Center for Head Injury Services This session will cover strategies to preserve independence for someone who is aging with a head injury, including how to assess the individual's needs, wants and strengths to contribute to success, and how to understand the brain and how a brain injury impairs daily functioning. <i>Ballroom A</i>

2:15 Break

2:30 POSTNOTE: BETTER TO BE KIND THAN RIGHT: COMMUNICATION & DEMENTIA CARE

JANIS MCGILLICK, MSW, LNHA, DOLAN MEMORY CARE HOMES

Grand Ballroom

Effective communication is critical to providing supports for those with dementia. Participants will learn various communication therapies and best practices for successful engagement.



Janis McGillick, MSW, LNHA

3:30 Conference concludes

The conference planning committee has selected speakers who are experts in their field. Speakers are solely responsible for the content of their presentation.

Conference Awards—Tuesday

During lunch on Tuesday, the 28th Annual Aging with Developmental Disabilities Conference Committee will honor two award recipients.

The Allene M. Jackson Award originated in 2003 in honor AADD's founding Executive Director, Allene M. Jackson, who led the agency from 1989 to 1995. This award is given to direct care staff who have demonstrated a commitment to excellence in their work with a person or persons who are at least 50 years of age and have a developmental disability.

The Dr. John E. Morley Award, originated in 2017, is named after the inaugural recipient, Dr. John E. Morley. Dr. Morley is one of the nation's foremost authorities on geriatrics, receiving his medical degree from University of the Witwatersrand. Since 1989, he has been a Dammert Professor of Gerontology and Director for the Division of Geriatric Medicine, Department of Internal Medicine at Saint Louis University Medical Center. He has also been the Director of the Division of Endocrinology at Saint Louis University Medical Center since 2006. The John E. Morley award is given in honor of individuals who show commitment and leadership in reducing barriers and/or creating new opportunities for persons who are at least 50 years of age and have a developmental disability. Eligible recipients are doctors, nurses, social workers, administrators, and management professionals who have followed in Dr. Morley's path in opening doors for this population.



Tuesday

Attention NTG trainers!

Please join us on Tuesday, May 22, 2018

from 3:30 pm to 5:00 pm in Ballroom D3.

The Dementia Capable Care Team ~ St. Louis Region is hosting a BY INVITATION ONLY gathering to learn how other NTG trainers are using their training materials and to discuss what we as a group hope to achieve across Missouri.





Documentation Solutions for Home & Community-Based Support Providers Serving Individuals with Intellectual & Developmental Disabilities

Electronic Solutions for:

- Individual Support Plans & Goal Tracking
- Attendance
- Health Tracking
- Medication Administration Records
- Behavior Tracking
- Event Reporting
- Daily Notes & Logs
- Secure Staff Communication
- Individual Finance Tracking
- Individual Volunteer & Employment History
- HIPAA-Compliant Document Storage
- Trend Analysis
- Generating Billing Data from Documentation

Mobile ISP Data



- ✓ Remotely Collect Service Data
- ✓ Electronic Visit Verification
- ✓ GPS Location Tracking
- ✓ Collect Signatures to Verify Service Delivery
- ✓ Take Photographs as Part of Documentation

Therap Dashboard

Ashley Wilson, 000012

Home Profile Plans Case Status

Modules

- Attendance
- Case Note
- Consent and Authorization
- Document Storage
- General Event Reports (GGR)
- GGR Resolution
- Health Tracking
- Individual Care Plan
- ISP Data
- ISP Program
- MAR Data
- T-Log
- Time Tracking

Go To

- Individual Data
- Emergency Data Form
- Individual History
- Employment History
- CHAT
- Health Passport

ISP Programs

Name
Ashley's Bed Making Program (1st Street Group Home)
Communication (1st Street Group Home)
Eating (1st Street Group Home)
Physical Therapy (1st Street Group Home)

Service Authorizations (Professional Claim)

Name	Date Range
H2020 - Behavior Assessment	01/01/2016 - 12/31/2016

Service Authorizations (Institutional Claim)

Name	Date Range
97111 - Physical Therapy	03/01/2016 - 03/31/2016

Individual Home Page

Stacy Wilson

Business Development
Consultant

stacy.wilson@therapservices.net
(816) 905-2100



www.TherapServices.net



**HIPAA
Compliant**



EVERSPRING
PHARMACY

"PatientsFirst"

Our Number

OnePriority

314-344-9094

www.EverSpringRx.com

*Sleep comfortably through your dental care
and wake up to a healthy new smile!*

**Sleep Dentistry for the Developmentally Disabled
by the Experts in Dental Anesthesia!**



**THE DENTAL
ANESTHESIA CENTER**

Sean M. Thoms, DMD, MS

Michael J. Hoffmann, DDS

Diplomates, American Dental Board of Anesthesiology

Victoria Q. Daugherty, DDS

Hospital Dentistry

- Fillings, Root Canals,
Gum Disease
- Extractions and Implants
- Crowns and Dentures
- Oral Sedation, IV
Sedation and General
Anesthesia

950 Francis Place, Ste. 305 • St. Louis, MO 63105

314-862-7844 • www.sleepdentistrystlouis.com

Dr. Hoffmann and Dr. Thoms are certified in Deep Sedation and General Anesthesia by the Missouri Dental Board.



The Elder & Disability Advocacy Firm

of Christine A. Alsop, LLC

ATTORNEYS AT LAW

**Our office is as warm as our
chocolate chip cookies.**

Our services include: Elder Law; Estate Planning; Special Needs Trust; Guardianships and Conservatorships; Medicaid Planning; Veterans Benefits; Long-Term Care and Nursing Home Planning; Fiduciary and Estate Litigation; and Probate and Trust Administration

Website: www.AlsopElderLaw.com

Local: 314-644-3200

Toll Free: 1-800-578-0384



For more information contact us at:

Mike Gruenewald
314-342-7191
michael.gruenewald@usi.com

USI Insurance Services
308 North 21st Street
St. Louis, MO 63103
www.usi.com

Knowledge. Resources. Experience.

Risk Management done right.

Top quality risk management with bottom line benefit – that's the goal of our individualized risk management solutions. At USI we have local insurance specialists that combine deep data, broad experience and national resources to custom-fit an insurance plan that meets your needs.

**Property & Casualty | Employee Benefits | Surety
Personal Risk Services | Retirement Consulting**



FestAbility

A Celebration of Disability

Saturday, July 28, 2018

1-9PM

Missouri History Museum

Forest Park • St. Louis, Mo

People with disabilities, friends and allies – show your pride with a day of fully accessible family fun, food trucks, music and entertainment as we celebrate all abilities and the anniversary of the Americans with Disabilities Act at FestAbility!



**MISSOURI
HISTORY
MUSEUM**





MEMORY CARE™
HOME SOLUTIONS



Help Is A Call Away

314-645-6247

Dementia Experts To Guide Your Family



THE AMERICAN SOCIETY OF BREAST SURGEONS
FOUNDATION

DentaQuest
FOUNDATION

Thank you to our
Silver Sponsor:



THE DENTAL
ANESTHESIA CENTER

MICHAEL J. HOFFMANN, DDS
VICTORIA Q. DAUGHERTY, DDS
SEAN M. THOMS, DMD, MS

www.DentalSleepStLouis.com
314-862-7844

Exceptional People

Exceptional Service

Exceptional Outcomes

Pharmacy Alternatives is a comprehensive pharmacy dedicated to helping all people we serve achieve their highest level of independence.

For more information, visit:

www.palrx.com

866.743.2443



Pharmacy Alternatives

THANK YOU TO THE 2018 AADD CONFERENCE SPEAKERS!

James “Max” Zubatsky, PhD, LMFT (zubatskyjm@slu.edu) is an Assistant Professor in the Medical Family Therapy program at Saint Louis University where he provides clinical services to individuals and caregivers with disability and illness. He was recently awarded the Geriatrics Scholar Award on a multi-years HRSA grant, with the goal of improving education and clinical outreach for the geriatric population in Missouri.

Michael Kiener PhD, CRC (mkiener@maryville.edu) is a tenured Professor at Maryville University in St. Louis, MO where he oversees the day-to-day operations of the graduate and undergraduate rehabilitation programs. He is also a member of the University at Buffalo’s Advisory Committee for the Counselor Education Ph.D. program.

Cynthia Mueller, PhD (Cynthia.Mueller@sbcglobal.net) has been employed for 35 years in the field of developmental disabilities, working for the state of Missouri, Department of Mental Health, Division of Developmental Disabilities at the St. Louis Regional Center for over 27 years in positions ranging from case manager to agency director. More recently, she worked for the Division of Developmental Disabilities Central Office as the State Eligibility Coordinator and Director of Children’s Services.

Craig Escude, MD, FAAFP (Craig@hrstonline.com) serves as Medical Director of Hudspeth Regional Center, a state residential program in Mississippi for those with severe and profound intellectual and developmental disabilities. He is also a provider of healthcare for people with serious mental illnesses at MS State Hospital in Whitfield.

Sherry Neal, RN-BC, CDDN (Sherry@hrstonline.com) has been an RN for over 40 years. She is board certified in two nursing specialties – gerontology and developmental disabilities, having over 20 years experience working with individuals with intellectual and developmental disabilities. She also has significant experience in geriatrics, pre-hospital emergency care, ICU and other nursing areas.

Janet Whitworth, DNP, APRN, FNP-BC (jwhitworth@bjc.org) is currently a Nurse Practitioner at Barnes-Jewish Hospital in St. Louis, MO. She worked in primary care for several years and provided care to a large number of adults with developmental disabilities. As a faculty member at both the University of Missouri and Goldfarb School of Nursing at Barnes Jewish College, both in St. Louis, she provided education to both undergraduate and graduate nursing students regarding the health care needs of adults with developmental disabilities.

Mary Ann Gehrin, MA (mgehrinoff@gmail.com) is the Executive Director of Options for Justice, which addresses the needs and concerns of St. Louis City, St. Louis County, St. Charles County and Lincoln County citizens with developmental disabilities who encounter the criminal justice system. Options For Justice provides support services and education/training for persons with developmental disabilities and professionals in the criminal justice, social service, and/or developmental disabilities service delivery system.

Ed Weisbart, MD, CPE, FAAFP (pnhpMO@gmail.com) practiced family medicine at Rush Medical Center in Chicago for twenty years before moving to St. Louis in 2003 to become Chief Medical Officer at Express Scripts, a position from which he retired in 2010. Since 2004 he has also been an assistant professor of clinical medicine at Washington University in St. Louis. Because of his background, he also served as a pro bono consultant in the development of the 2017 documentary “Big Pharma: Market Failure”.

Holly Wamser, MSN, RN (Hollykim65@msn.com) has several years experience in providing services and supporting individuals with developmental disabilities. Following a career change to nursing, she has gained knowledge and experience in hospice services.

THANK YOU TO THE 2018 AADD CONFERENCE SPEAKERS!

Jeff Grosvenor (jgrosvenor@2gethertech.com) was employed for over 28 years with the Department of Social Services and the Department of Mental Health in the State of Missouri. For the last 15 years, he worked in the Division of Developmental Disabilities as the Director of Administration and retired in 2014 as the interim Division Director. He was also responsible for identifying creative solutions on how the state could most effectively use their limited resources to meet the needs of individuals and their families.

Anita Contreras, MSW (anitac@warrencountyddb.org) has had a 40+ year career in developmental disabilities services ranging from a case manager to the Regional Administrator at the Missouri Department of Mental Health Division of Developmental Disabilities. She has spent the past five years at the Warren County Developmental Disabilities Board, where she currently serves as the Executive Director.

Nancy Shrewsbury, MSN, RN (nancy.shrewsbury@health.slu.edu) has 30 years of experience in working with people with developmental disabilities. Her undergraduate degree provided training to first be employed as a Rehabilitation Teacher for people with disabilities. In working with the MO Department of Mental Health, Division of Developmental Disabilities for 28 years, she was a case manager and a Quality Assurance Specialist. She is now a Nurse Care Manager at SLUCare Physician Group in St Louis, MO.

Jeff Case, PMP (jeff.case@therapservices.net) has worked with non-for profits for the past 30 years. In 1993, along with his wife, he started Developing Potential, Inc. in the Kansas City metropolitan area serving adults with intellectual/developmental disabilities. In 2008, he joined Therap Services has participated in the implementation and onboarding of I/DD agencies to the Therap Electronic Documentation solution.

Kelli Barton, PhD (bartonkn@umkc.edu) is an expert in mixed-methods research and evaluation and scholarship in health policy, healthy aging, and aging with a developmental disability. She has conducted several community-based evaluations of programs providing education, training, or supports and services to older adults, individuals with disabilities and their families, and service providers. She currently teaches as an Associate Lecturer at the University of Massachusetts-Boston on the state legislative process.

Eric Vidoni, PT, PhD (evidoni@kumc.edu) is a physical therapist licensed in Kansas and Missouri and a research assistant professor in the Department of Neurology at the University of Kansas Medical Center. As the Project Director for the KU Alzheimer's Disease Center, he is responsible for the annual pilot awards, promoting KU ADC resources to investigators interested in Alzheimer's disease and ensuring that projects are completed successfully with the help of the center.

Amy Yeager, LMSW (ayeager@alz.org) is a Dementia Care Specialist at the Alzheimer's Association-Heart of America Chapter. Her work experience has bolstered her education, having worked in the I/DD field as a direct support professional, program coordinator and support services coordinator. Additionally, the past 10 years with the Alzheimer's Association has allowed her to gain clinical expertise and further grow her skill set in the space where these two specialties overlap.

Kari Burch, OTD, OTR/L (kburch@memorycarehs.org) is an occupational therapist at Memory Care Home Solutions, providing services to persons with Alzheimer's disease and related dementias living in the community, as well as their caregivers.

Sheila Lynch, OTR/L (slynch@memorycarehs.org) has worked in the field of occupational therapy since 2001 and is currently working with caregivers of individuals who have memory loss or dementia in modifying the environment that will enable their loved one with dementia to maintain independence and reduce confusion during tasks.

Kate Fox, MA (Katefox82@gmail.com) is a Spiritual Director who has conducted both individual and group spiritual direction, also known as spiritual guidance, spiritual friendship, or spiritual companionship. She has also helped lead retreats and taught contemplative prayer practices.

THANK YOU TO THE 2018 AADD CONFERENCE SPEAKERS!

Lawrence N Eisenman, MD, PhD (LEisenman@wustl.edu) is currently a faculty member of the Adult Epilepsy Center of Washington University School of Medicine, where he also completed an Epilepsy/Clinical Neurophysiology Fellowship. He is interested in clinical research aimed at improving outcomes and quality of life in patients with epilepsy.

Mary Hitchcock-Reinhart, MT-BC, NMT Fellow (General6@sbcglobal.net) has worked at Ranken Jordan Pediatric Bridge Hospital for over ten years as a Music Therapist. In 2016, she completed a Neurologic Music Therapy Fellowship.

Joseph Piven, MD (joe_piven@med.unc.edu) is currently a Thomas E. Castelloe Distinguished Professor of Psychiatry, Pediatrics and Psychology at the University of North Carolina at Chapel Hill and Director of the Carolina Institute for Developmental Disabilities, a comprehensive institute for services, research and training relevant to neurodevelopmental disorders. Dr. Piven is an active clinician. He directs an NIH-funded postdoctoral research training program in neurodevelopmental disorders at UNC, and is Director of an NIH-funded Autism Center of Excellence Network study of brain development in infants at risk for autism. He is founding Editor of the Journal of Neurodevelopmental Disorders. His research is focused on: (1) the pathogenesis of autism related disorders (such as Fragile X Syndrome) and includes studies on the molecular genetics of autism, the neuropsychological basis of autism and the broad autism phenotype, and magnetic resonance imaging of early brain development; and, (2) clinical studies describing characteristics of older adults with autism.

Laura Grofer Klinger, PhD (laura_klinger@med.unc.edu) is the Director of the UNC TEACCH Autism Program, and Associate Professor in the Department of Psychiatry, and Clinical Associate Professor in the Department of School Psychology at the University of North Carolina at Chapel Hill. Dr. Klinger is a licensed psychologist with 25 years of experience supervising clinical and research trainees and staff in the assessment and implementation of intervention services and research in both outpatient clinic and school settings. Her research includes the study of learning differences in individuals with ASD and the development of community-based intervention programs to promote successful adult outcomes. Dr. Klinger is conducting a longitudinal study examining outcomes in 25-65 year-old adults with ASD who were served by TEACCH during childhood and a school-based pilot intervention study examining the effectiveness of the TEACCH School Transition to Employment and Post-Secondary Education (T-STEP) Program. Dr. Klinger has authored or co-authored over 30 manuscripts, books, or chapters on ASD.

Christina Meneses, MSW (cmeneses@ywcastlouis.org) began working at the YWCA St. Louis Regional Sexual Assault Center after completing her MSW at Washington University in St. Louis. After 13 years, she transitioned to the Sexual Health and Disability Education program at the YWCA in 2014. In this new role, she provides relationship and sex education to individuals and small groups with developmental disabilities, using a blend of existing curricula and developing new materials as needed. She also convened the Safe Circle Coalition, a group of service providers, individuals with disabilities, and guardians who discuss the prevention of abuse of people with disabilities.

Craig M. Sever BS, RPh (csever@everspringrx.com) spent 13 years as a Clinical Pharmacist in a 500 bed hospital. For the last 18 years, he has been a consultant pharmacist with a patient load of approximately 1,000 patients per month. 500-600 of these patients monthly have been exclusively in the DD community.

Gina Alvarez, MFA (vsamissouri@gmail.com) has worked as a professional artist in several capacities. She has exhibited her artwork across the country and for the six years has been the Executive Director of VSA Missouri, a statewide organization promoting access to the arts for people with disabilities. She has also been an Adjunct Faculty Member at Forest Park Community College for two years.

Sharon Spurlock, BA (sspurlock@slarc.org) has worked in support of people with intellectual and developmental disabilities since 1982. She currently serves as Director of Family Support at the St. Louis Arc where she facilitates a support group for older parents. She was a founding collaborator in the UMSL SUCCEED program and the Safe Circle Coalition.

THANK YOU TO THE 2018 AADD CONFERENCE SPEAKERS!

Martha Brown, JD, CELA (mcbrown@elderlawstlouis.com) has been practicing in the field of Elder Law for over 30 years and is a Certified Elder Law Attorney as certified by the National Elder Law Foundation. Her firm, Martha C. Brown & Associates, LLC concentrates on the unique legal needs of the elderly, disabled, and the families who care for them.

John Dane, DDS, FAAHD, DABSCD (John.dane@health.mo.gov) has nearly 40 years of experience providing dental care to persons with developmental disability at Truman Medical Center Lakewood in Kansas City, MO. He was also the Director of the Elks Mobile Dental Program in Missouri for over 30 years. He is a member of Special Care Dentistry and a Diplomate of the American Board of Special Care Dentistry. He has also lectured on the topic of dental care for patients with special needs at UMKC School of Dentistry.

Christina Lessov-Schlaggar, PhD (Lessov-schlaggar@wustl.edu) is an academic scientist investigating the development of substance use and dependence using the tools of epidemiology, genetics, cognitive neuroscience, neuroimaging, and geographic information systems. Most recently, she embarked on a new research agenda – assessing dementia in adults with Down syndrome – which embodies the same scientific challenges as any complex phenomenon and which requires investigation at multiple levels including epidemiology, genetics, and neurobiology.

Beckie Gierer, MS (Beckie.gierer@dmh.mo.gov) joined the MO Department of Mental Health's Office of Disaster Services as the Assistant Coordinator where her career in disaster work started. In 2017, she took on the responsibility of continuity of operations for DMH. She is the presenter for a variety of trainings that involve Continuity of Operations, Personal Preparedness, Psychological First Aid, and the Crisis Counseling Program.

Rev. Dorothy Gannon, MDiv (dgannon@bethesdahealth.org) provides spiritual care and support to patients, family members and staff in a hospice program, as well as educating the community on hospice, grief and loss, and end of life.

Amy Cyr, MD, FACS (amycyr@wustl.edu) came to St. Louis for a fellowship in Breast Surgical Oncology at Washington University. She was then hired as faculty at Washington University in the Section of Endocrine and Oncologic Surgery where she treats benign and malignant breast disease. She also serves on the National Comprehensive Cancer Network Breast Cancer Treatment panel.

Debbie Dinzebach, OTR/L (ddinzebach@headinjuryctr-stl.org) has worked as an OT since 1985 with primary emphasis in neuro rehab. She has worked in a variety of settings but currently works in a day program for the Center for Head Injury Services. She also has a background in academics teaching at each of the OT schools in St. Louis as well as several of the OTA programs.

Janis McGillick, MSW, LNHA (jmcgillick@dolancare.com) has been a geriatric social worker for over 40 years, holding management and director positions at several long term care communities, currently working as the Director of Community Engagement at Dolan Memory Care Homes. For 23 years, she worked as the Education Director at Alzheimer's Association- St. Louis Chapter. Additionally, she is a licensed nursing home administrator and has also served as an adjunct Gerontology faculty at Lindenwood University for the past 15 years.

A Big Thank You to Our Self Advocate Session Speakers:

Debbie Kricensky, St. Louis County Public Works; Joseph Palm, MPH, MO Dept. Health & Senior Services; Mary Hitchcock-Reinhart, MT-BC, NMT Fellow, Ranken Jordan Pediatric Bridge Hospital; Judy Moore, AADD; Kristina Anderson, MD, SIHF Healthcare; Beckie Gierer, MS, MO Department of Mental Health Office of Disaster Services; Christina Meneses, MSW, YWCA of Metro St. Louis

Continuing Education Units Provided By:



SAINT LOUIS UNIVERSITY
SCHOOL OF NURSING



Illinois Department of Human Services



MISSOURI CHAPTER

National Association of Social Workers

Sessions not eligible for CEUs:

Supporting Individuals of All Abilities With the Criminal Justice System

It's All About the Process: Making Art and Community at Living Arts Studio

If you have questions about CEU's, please visit the CEU Table in the registration area.

AADD's History



**Pamela J. Merkle,
Executive Director**

The Association on Aging with Developmental Disabilities (AADD) was initially formed in 1989 as a special interest group and became incorporated in 1994. AADD has a primary objective of bringing the aging and developmental disability fields together to create and provide best practices for people aging with developmental disabilities. It is a one of a kind organization in the United States, serving three area counties through ongoing programs and providing consultation and education beyond the geographical service area. Under the leadership of Executive Director, Pamela J. Merkle, programs for people with developmental disabilities supported by AADD have been successful with progressive growth over the last 20 plus years.

Through our direct services, AADD's overarching goal is to prevent entry into unnecessary long-term care placement and premature death in individuals who are aging with developmental disabilities. In response to the latter, all AADD programs have a common goal to provide necessary training to assist individuals in achieving a greater independence in the home and community, while aging in place.

THANK YOU TO THE 2018 AADD CONFERENCE EXHIBITORS!

Ashley Stockman , Adult Day Center at the J - Jewish Community Center

astockman@jccstl.org 314-442-3245

*Cody Hinkle, Beverly Farm Foundation**

hinkle@beverlyfarm.org 618-466-0367

*Ann Munier, Center for Hearing & Speech***

muniera@chsstl.org 314-968-4710

Cindy Carr & Julia Allen, CLAIM

ccarr@primaris.org 573-673-5278

Karen Cox, EverSpring Pharmacy

kcoxrxrep@gmail.com 314-344-9094

Craig Escude' & Sherry Neal, Health Risk Screening

craig@hrstonline.com sherry@hrstonline.com 877-748-4778

Martha Brown, Martha C. Brown & Associates, LLC

mcbrown@elderlawstlouis.com 314-962-0186

*Jill Cigliana, Memory Care Home Solutions**

jcigliana@memorycarehs.org 314-645-6249

Nathan Bush, Miracle Ear St. Louis

nathanbush@miracleearstl.com 314-328-0088

Diana Love, MO Chapter National Academy of Elder Law Attorneys

diana@monaela.org 573-634-7772

Robert McKee, MO Dept. of Insurance, Financial Institutions & Professional Registration

robert.McKee@insurance.mo.gov 573-751-1959

Dean Andersen, MO Dept. of Health & Senior Services Special Healthcare Needs

dean.andersen@health.mo.gov 573-751-6241

Bold = Exhibiting Both Days

Italics = Exhibiting Monday Only*

*Italics** = Exhibiting Tuesday Only*

PLEASE VISIT CONFERENCE EXHIBITORS THROUGHOUT MONDAY AND TUESDAY!

Nicholas Doyle, MO Protection & Advocacy

nicholas.doyle@mo-pa.org 314-256-9677

*Christopher Marlow, MO Securities Vulnerable Citizens Services Unit***

christopher.marlow@sos.mo.gov 573-751-1862

Brian Henning, MO Senior Medicare Patrol

bhenning@goaging.org 660-747-5447

*Michelle Donovan Cuddihee, NextStep for Life**

mrcuddihee@nextstepforlife.org 636-282-4410

Kathleen Brown, Pharmacy Alternatives

kathybrown@palrx.com 847-269-3167

*Deirdre Cechin, Quinn Estate & Elder Law, LLC**

dcechin@quinnestatelaw.com 636-394-7242

Al Alvord, Relay MO

allen.alvord@sprint.com 860-899-1097

*Laura Cooper, SETWorks**

lcooper@set-works.com 816-674-7668

Michael J. Hoffmann DDS, PC, The Dental Anesthesia Center - Sleep Dentistry

mjh@dac950.com 314-862-7844

Stacy Wilson, Therap Services, LLC

stacy.wilson@therapservices.net 816-905-2100

Resource Tables:

Recreation Council of Greater St. Louis
www.recreationcouncil.org

American Society of Breast Surgeons Foundation
www.breastsurgeonsfoundation.org

Exhibitor booths and advertisements are for the information and convenience of conference attendees and does not constitute endorsement or recommendation by the Association on Aging with Developmental Disabilities staff, Board of Directors, or Conference Committee.



***AADD would like to thank Carol Crebs all of her hard work and dedication as the
2018 Conference Committee Chairperson!***

AADD Board of Directors



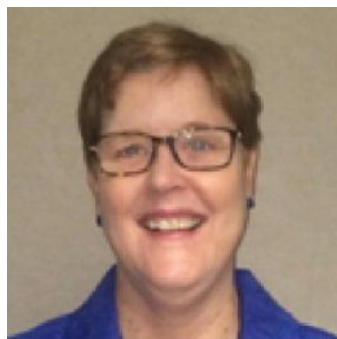
**Martha Brown, JD,
Board President**

Martha C. Brown & Associates, LLC



**Janis McGillick,
Board Vice President**

Dolan Memory Care Homes



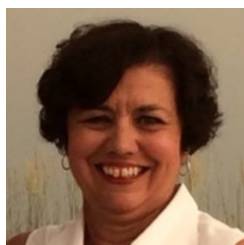
**Nancy Shrewsbury,
Board Secretary**

SLUCare Physician's Group



**Buz Zeman,
Board Treasurer**

Housing Options for the Elderly, Inc.



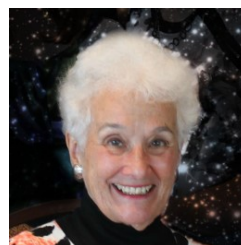
**Martina Bettlach,
Board Member at Large**
Registered Nurse (Retired)



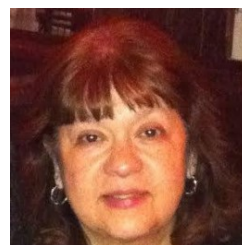
Valerie Baker
Mass Mutual St. Louis



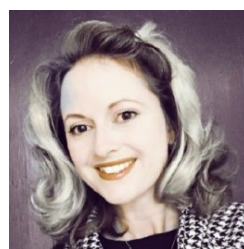
Kelli Barton
University of Missouri Kansas City
Institute for Human Development



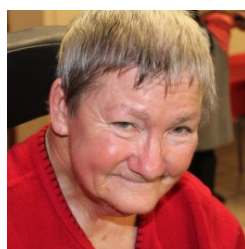
Carol Crebs
Retired Educator



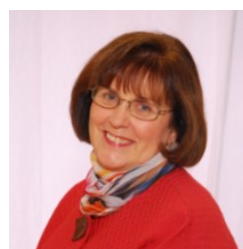
Anita Contreras
Warren County DD Board



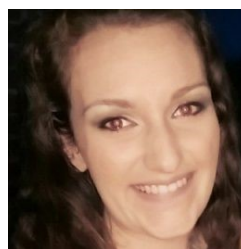
Cody Hinkle
Beverly Farm Foundation



Bobbie Draeger
Self-Advocate



Catherine Goebel
Retired State Guardian



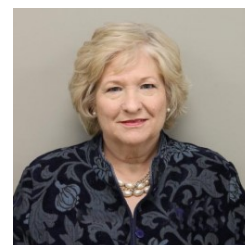
Tianna Greenhill
Lake St. Charles Retirement Community



Tina Grosso, PhD
Lindenwood University



Jean Krampe
St. Louis University School
of Nursing



Glenna James
Independent Consultant



Mike Nickel
St. Louis County Government



Melissia Robinson
St. Andrews's Senior Solutions



Mary Anne Tolliver
St. Louis Arc



ASSOCIATION ON AGING WITH
DEVELOPMENTAL DISABILITIES

Neighborhood Assistance Program (NAP) Tax Credits



The Association on Aging with Developmental Disabilities has been awarded Neighborhood Assistance Program tax credits by the Missouri Department of Economic Development to help fund programs that prevent premature nursing home placement for seniors with developmental disabilities by providing aging in place services.

Individuals or businesses with Missouri business income who donate **\$500 or more** to AADD are eligible for credits against their Missouri income taxes. The credit amount is equal to 50% of the donation in addition to the charitable tax deduction savings.

The credit may first be claimed on taxes due for the year the contribution was made, and extends for five additional tax years. The tax credit is only to be claimed on taxes due for that period, and any credit not claimed in that time will automatically be forfeited. The credit may not be used to offset taxes due for periods prior to the year of contribution.

For more information, call (314) 647-8100 for more information.

18th Annual Association on Aging with Developmental Disabilities Trivia Night (St. Louis)

FRIDAY, OCTOBER 12, 2018

ST. JOAN OF ARC PARISH CENTER

7:00-10:30 p.m.

5821 Pernod Avenue

Doors Open at 6:00 p.m.

St. Louis, MO 63139

Reserve your table of 8 now for ONLY \$200!!!!

Ridiculously Righteous Raffle Prizes!!

Stupendous Silent Auction Prizes!!

Call (314) 647-8100 for more information.



Mission: The Association on Aging with Developmental Disabilities (AADD) supports and serves aging adults with developmental disabilities to promote their dignity and independence.

Thank you for attending the 28th Annual Aging with Developmental Disabilities Conference!

Please keep in contact with us throughout the year.

**2385 Hampton Avenue
St. Louis, MO 63139**

314-647-8100

www.agingwithdd.org



www.facebook.com/agingwithdd

AADD's Funding Partners:



*Daughters of Charity Foundation
of Saint Louis*

*Herbert A. and Adrian W. Woods Foundation,
Bank of America, N.A., Trustee*